

MEDICAL CITY

In association with Al Farabi National University

iholding
Investment Conduit for Large-Scale Projects

Medical City in Partnership with Al Farabi University: Pioneering Healthcare Innovation

The Medical City project in Almaty spans 700 hectares integrating 350 hectares for advanced medical research and 350 hectares for educational facilities a university and dormitories the partnership with Al Farabi University aims to establish a regional centre of excellence and healthcare innovation and education.



MEDICAL CITY

CONCEPT 1

iholding GROUP LLP
Investment Conduit for Large-Scale Projects



MEDICAL CITY

CONCEPT 2

iholding GROUP LLP
Investment Conduit for Large-Scale Projects



Zhanseit Tuimebayev



**Zhanseit Tuimebayev, Rector of
Al-Farabi Kazakh National University,**



He is a distinguished statesman of the Republic of Kazakhstan, an esteemed diplomat, scholar, Doctor of Philological sciences, professor, and Ambassador Extraordinary and Plenipotentiary.



Cutting-Edge Facilities for Medical Research and Education

World-class labs, hospitals, education, and student life amenities



State-of-the-art Research Laboratories

Equipped with the latest technology to advance biomedical, pharmaceutical, and clinical research at international standards.



Advanced Clinical Facilities

Integrated hospitals and outpatient centers designed for superior patient care and efficient clinical trials.



Modern Educational Buildings

Spacious lecture halls, seminar rooms, and innovation hubs foster effective learning for students and faculty.



Student Dormitories with Vibrant Campus Life

Comfortable and secure accommodations that promote a supportive and lively student community within the Medical City.



Recreational and Support Amenities

Green spaces, sports complexes, cafeterias, and wellness centers to enhance well-being and campus experience.





Strategic Partnership Elevating Medical Innovation

Integrating academic excellence with cutting-edge medical research and education



Leverages Al Farabi University's distinguished academic strength and expertise

Partnership taps into one of Kazakhstan's leading universities with renowned faculty and research capabilities.

Integrates advanced educational programs with practical medical research

Combines theoretical learning with hands-on research to drive healthcare innovation and discoveries.



Provides faculty and students direct access to cutting-edge laboratories

State-of-the-art labs and clinical facilities enhance experiential learning and medical innovation.

Fosters an environment for groundbreaking medical discoveries

Collaboration encourages innovative research initiatives benefiting healthcare advancements.

Supports development of skilled healthcare professionals

Combines academic rigor with practical experience to prepare future medical leaders.



Engages a diverse student body in medical and educational programs

Diverse enrollment nurtures inclusive learning and broad perspectives in healthcare solutions.

Strengthens Medical City's mission through academic collaboration

Partnership aligns with Medical City goals to advance healthcare education and research infrastructure.



Utilizes 700 hectares divided equally for research and education facilities

Dedicated land supports expansive medical research and university education including dormitories.

Medical City Land Allocation Overview

Balanced zones for research and education



Medical Research Zone

350



Advanced research laboratories and clinical trial centers

Education & University Zone

350



University buildings, lecture halls, dormitories, and recreational facilities



Optimized Medical City Campus Design

Strategic layout fostering research, education, and sustainability



Zoning Strategy

The campus is divided into two main zones: Medical Research and Education, each covering 200 hectares to optimize space and function separation.

Enhanced Connectivity

Pedestrian pathways, shuttle services, and green corridors link zones, promoting easy movement and active collaboration throughout the campus.

Green Landscaping

Extensive green spaces and parks improve environmental quality and provide tranquil areas for study, research, and relaxation.

Transport Infrastructure

Efficient internal transport systems ensure quick and easy access between facilities, supporting timely collaboration and resource sharing.

Integrated Facilities

The layout includes university buildings and dormitories within the education zone to support academic life and student accommodation.

Sustainable Design

The overall design balances operational efficiency with sustainability and wellness, fostering a healthy campus environment.

Synergizing Research and Academia for Medical Breakthroughs

Integrating education and research to foster innovation and global healthcare advances

Collaborative Research Programs

Joint projects involving students, faculty, and clinical researchers drive innovation.



Hands-on Training Opportunities

Students gain practical experience in advanced labs and clinical settings.



Innovation Incubators Support Startups

Incubators nurture startups and spin-offs emerging from research activities.



Continuous Professional Development

Workshops and seminars led by international experts keep knowledge current.



Dynamic Integration for New Therapies


Fosters development of therapies, technologies, and healthcare solutions globally.





Strategic Roadmap for Medical City Development

Phased milestones ensuring timely completion and transparency

Phase	Timeline	Key Deliverables
Phase 1 - Planning & Approvals	Q1 2025 – Q4 2025	Land acquisition, master planning, regulatory approvals
Phase 2 - Infrastructure & Construction	Q1 2026 – Q4 2028	Building research labs, educational facilities, dormitories
Phase 3 - Operational Launch	Q1 2029 – Q4 2029	Facility commissioning, faculty recruitment, student enrollment
	2030 onwards	Research program expansion, international partnerships, innovation hubs

Socio-Economic Impact of Almaty Medical City

Catalyzing growth, healthcare quality, and education excellence



Impact Area	Description	Estimated Outcome
Employment	Creation of healthcare and academic jobs	10,000+ new jobs by 2030
Healthcare Quality	Enhanced patient care and research	Reduced morbidity rates by 15%
International Collaboration	Partnerships and funding	\$150M+ annual research funding
Education	Skilled healthcare workforce	5,000 graduates annually
Economic Growth	Local business stimulation	3% regional GDP increase

Medical Center

Professional clinics

Dentistry, Ophthalmology, Dermatology, Internal medicine, Neuropsychiatry

Site Area 50,000 m²

Total Floor Area: 20,000 m²

2 F – 8F 1 Buildings

125 Rooms



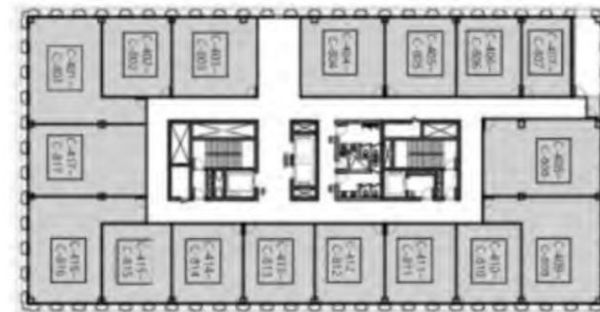
2F

1,180m ²	1,347m ²	2,527m ²	46.7%
---------------------	---------------------	---------------------	-------



3F

1,331m ²	1,521m ²	2,852m ²	46.7%
---------------------	---------------------	---------------------	-------



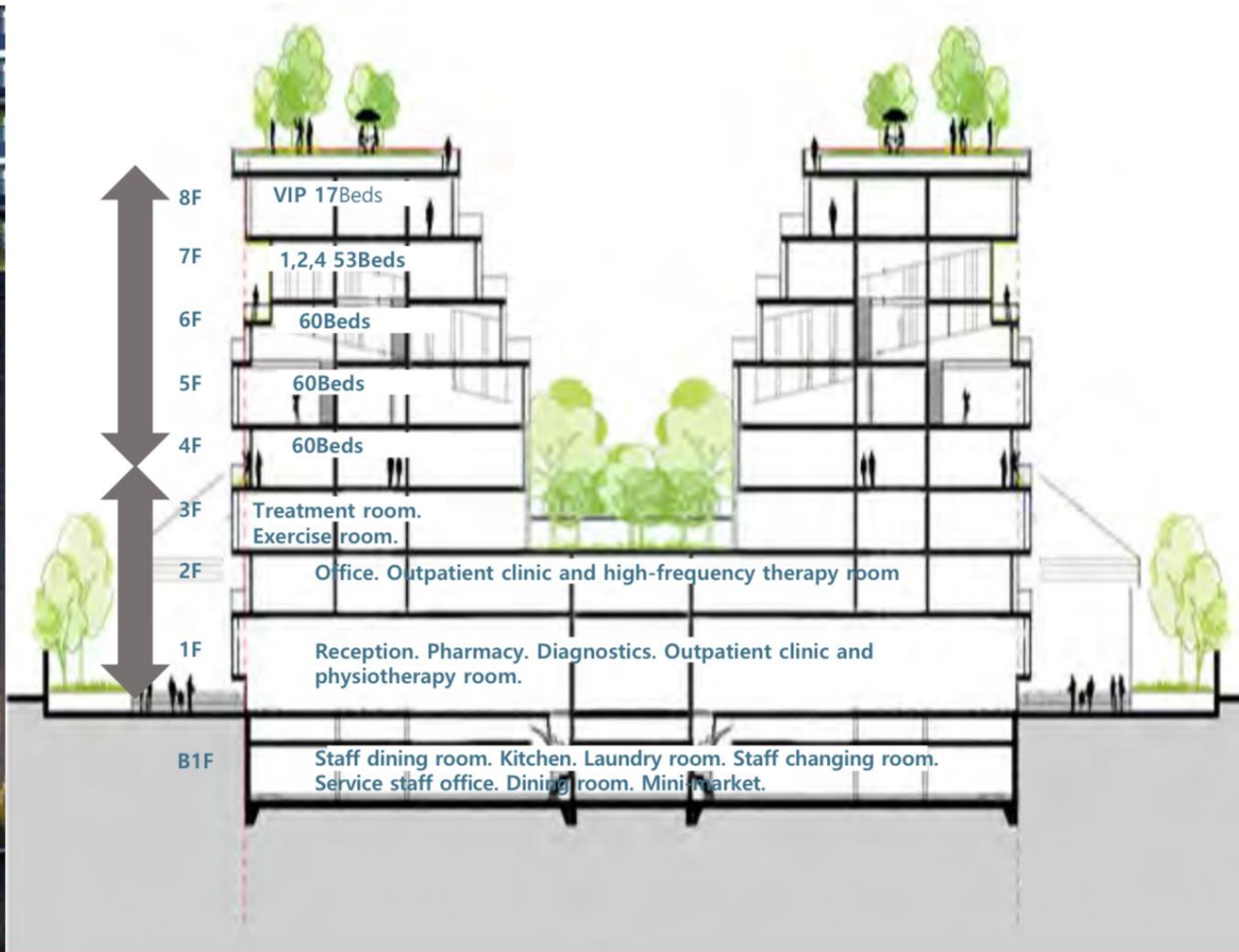
4F-8F

1,331m ²	1,521m ²	2,852m ²	46.7%
---------------------	---------------------	---------------------	-------

Oriental Medicine Hospital

Oriental medicine hospital for well aging
Improve immunity / Spine and Joint center / Anti-aging program

Site Area : 50,000 m²
Total Floor Area : 30,000 m²
B1F – 8F 1 Buildings
250 Beds



Hospital Overview

Site Area: 480,000 m²
Total Floor Area : 512,000 m²
Beds: 2,500

General Hospital



Total Floor Area : 335,000m²
Beds : 1,000

Cancer Hospital



Total Floor Area : 110,000m²
Beds : 500

Cardiovascular Hospital



Total Floor Area : 17,000m²
Beds : 250

Rehabilitation Hospital



Total Floor Area : 14,000m²
Beds : 200

Burn Unit



Total Floor Area : 23,000m²
Beds : 250

Children's Hospital



Total Floor Area : 13,000m²
Beds : 300

General Hospital Image Photo



Specialty Hospital Image Photo



Medical School Overview

- Site Area: 155,000 m²
- Total Floor Area : 168,000 m²
- Students : 2,500 People

College of Medicine



Total Floor Area : 114,000m²
Number of Students : 750 People
(125 x 6 Grade)

School of Dentistry



Total Floor Area : 17,000m²
Number of Students : 450 People
(75 x 6 Grade)

College of Nursing



Total Floor Area : 10,000m²
Number of Students : 400 People
(100 x 4 Grade)

College of Pharmacy



Total Floor Area : 10,000m²
Number of Students : 300 People
(50 x 6 Grade)

College of Korean Medicine



Total Floor Area : 17,000m²
Number of Students : 600 People
(100 x 6 Grade)

Medical School Image Photo



Partner with Us to Revolutionize Medical Innovation and Care in Almaty

We invite government bodies, investors, academic institutions, and healthcare leaders to partner in building a landmark Medical City that revolutionizes research, education, and patient care in Kazakhstan and Central Asia.

Already subscribing and investing in the development of medical city:



MEDICAL CITY

In association with Al Farabi National University

iholding
Investment Conduit for Large-Scale Projects

Websites: iholding.kz | iholding.uk

iholding
Investment Conduit for Large-Scale Projects

GROUP LLP

